



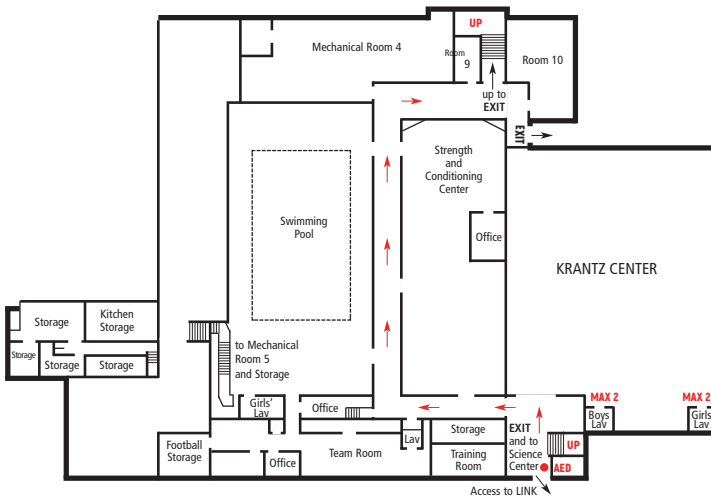
Edgewood High School will display signage and direction arrows guiding our students, staff, faculty and visitors to ensure all are following social distancing guidelines throughout our building. Building traffic patterns and groups will be used to ensure that students do not cluster in hallways during passing times.

- Signage states that 6-foot social distancing is mandatory throughout the school at all times.
- Arrows indicate appropriate one-way traffic patterns and directional flow and to ensure proper 6-foot social distancing.
- Restrooms will be marked with capacity limits to manage and meet social distance requirements.
- All desks, tables and workspaces will be spaced 6 feet apart.

Below are layouts of each floor showing traffic patterns, directional flow and room capacity guidelines:

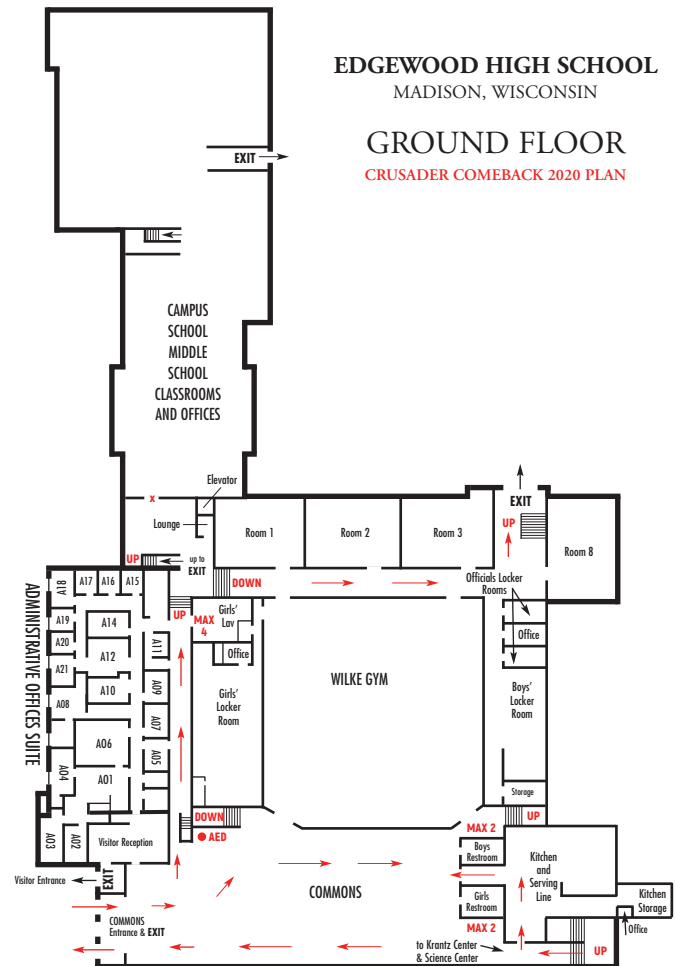
EDGEWOOD HIGH SCHOOL
MADISON, WISCONSIN

**SUB-BASEMENT
LEVEL**
CRUSADER COMEBACK 2020 PLAN



EDGEWOOD HIGH SCHOOL
MADISON, WISCONSIN

GROUND FLOOR
CRUSADER COMEBACK 2020 PLAN

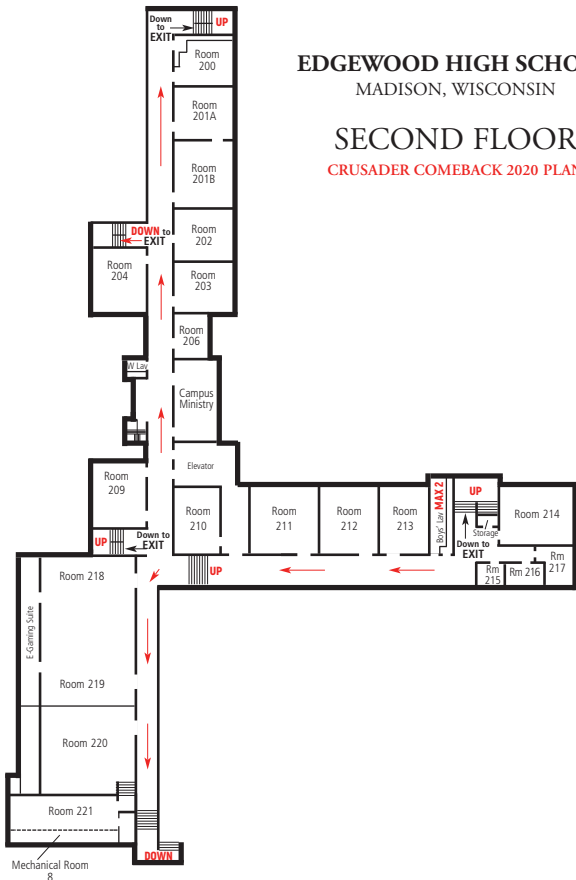




EDGEWOOD HIGH SCHOOL
MADISON, WISCONSIN
FIRST FLOOR
CRUSADER COMEBACK 2020 PLAN



EDGEWOOD HIGH SCHOOL
MADISON, WISCONSIN
SECOND FLOOR
CRUSADER COMEBACK 2020 PLAN



EDGEWOOD HIGH SCHOOL
MADISON, WISCONSIN
THIRD FLOOR
CRUSADER COMEBACK 2020 PLAN

